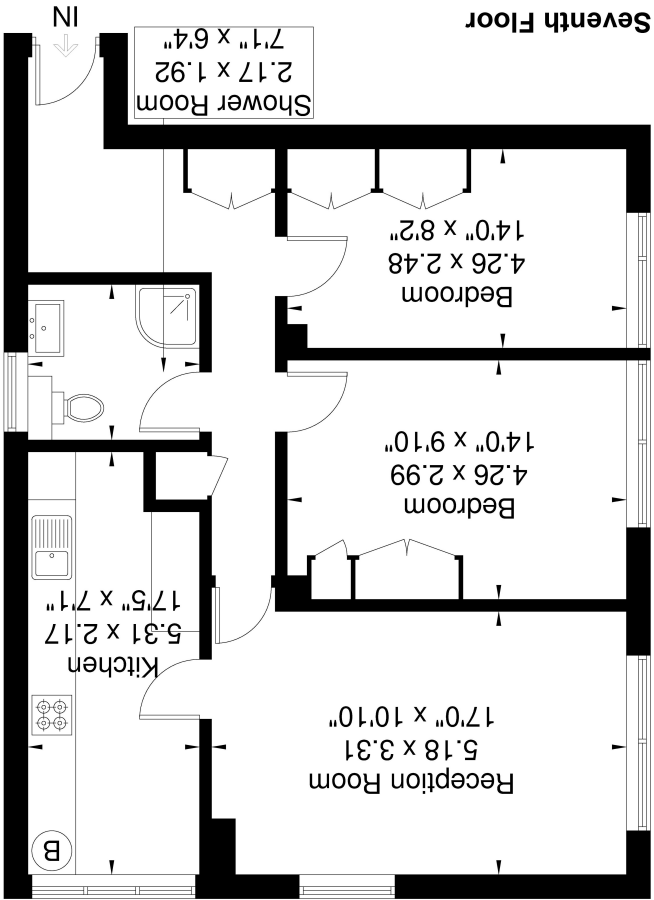


Although every attempt has been made to ensure accuracy, all measurements are approximate.  
The floorplan is for illustrative purposes only and not to scale.  
© www.perspective.co.uk



Approximate Gross Internal Area = 69.4 sq m / 747 sq ft



Flat 257 Kestrel House, Gurnell Grove, London. W13 0AD.

£249,950





**FIXED PRICE FOR A QUICK SALE! Cash Buyers required for this two bedroom seventh floor flat, presented to the market in good condition. The property is located opposite the Gurnell Grove Leisure Centre with also multiple bus routes into Ealing Broadway and Greenford close by as well as day to day shops.**

**The property briefly comprises of two bedrooms, bathroom with separate WC, reception and a good sized kitchen. Offered to the market with no onward chain.**

**Reception**

17' 0" x 10' 10" (5.18m x 3.30m) Double glazed windows, radiator

**Kitchen**

17' 5" x 7' 1" (5.31m x 2.16m) Double glazed window, radiator , range of eye and base level units, wall mounted boiler,

**Bedroom 1**

14' 0" x 9' 10" (4.27m x 3.00m) Double glazed window, radiator , fitted wardrobe

**Bedroom 2**

Double glazed window, radiator , fitted wardrobe

**Bathroom**

Double glazed window, radiator , shower cubicle, low level WC, vanity hand wash

