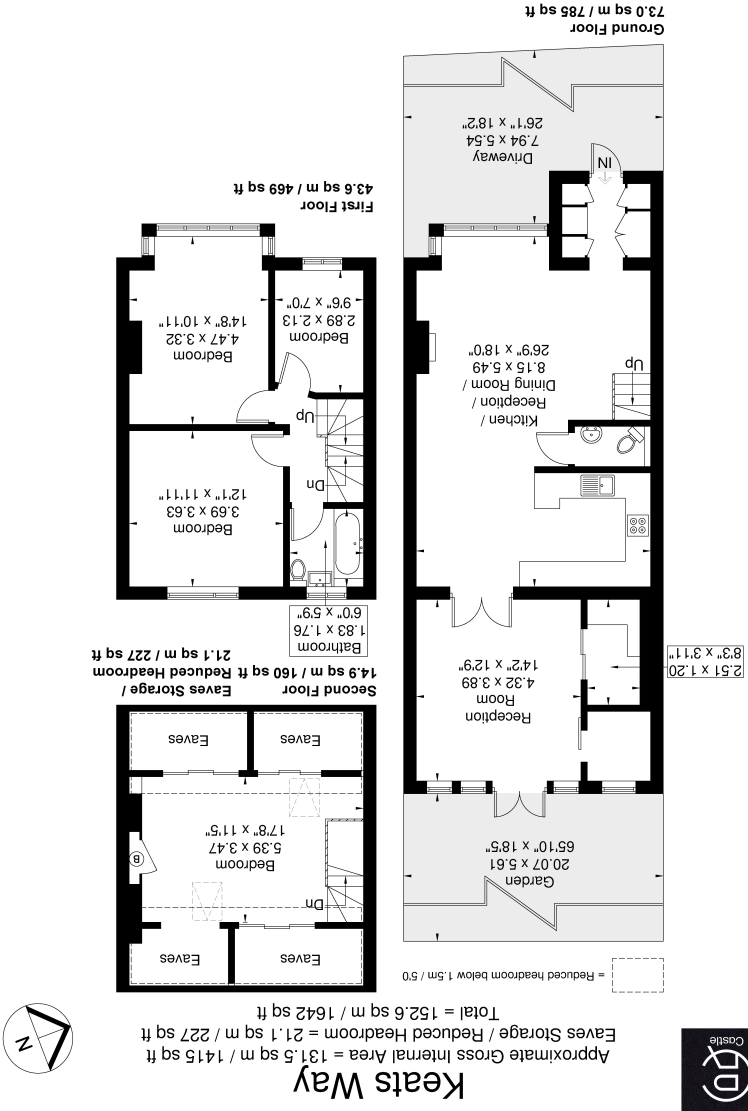


Although every attempt has been made to ensure accuracy, all measurements are approximate.
The floorplan is for illustrative purposes only and not to scale.
© www.perspective.co.uk



7 Keats Way, Greenford, Greater London. UB6 9HD.
£790,000

Finished to a high standard throughout, this beautifully refurbished and extended four-bedroom mid-terrace home offers stylish, modern living in a sought-after Greenford location.

The ground floor features a bright open-plan kitchen and reception space with sleek finishes, ideal for both everyday living and entertaining. A second reception room to the rear opens onto a landscaped, low-maintenance garden. There’s also a convenient downstairs WC and a secure front porch with modern security doors.

Upstairs, the property offers four generously sized bedrooms and a contemporary family bathroom. Every room has been thoughtfully designed for comfort and practicality.

The rear garden leads to a standout outhouse, fully equipped with electrics, built-in speakers, and outdoor heaters—perfect for year-round entertaining.

Additional benefits include off-street parking for two to three cars, double glazing, and a prime location close to schools, local amenities, and excellent transport links.

Driveway

7.94m x 5.54m (26' 1" x 18' 2") Paved, gated, fits up to 3 cars.

Kitchen/Reception/Dining Room

8.15m x 5.49m (26' 9" x 18' 0") 2 Wall mounted ovens, built in sink, modern extractor fan, floor to ceiling cabinets. Radiators, Fireplace, open plan living space, Large front aspect double glazed windows.

Reception room

4.32m x 3.89m (14' 2" x 12' 9") Utility with built in storage, storage room, space for washer and dryer, Large glass doors leading into garden space.

Bedroom 1

2.89m x 2.13m (9' 6" x 7' 0") Front aspect double glazed windows, Radiators

Bedroom 2

4.47m x 3.32m (14' 8" x 10' 11") Large front aspect double glazed windows, Radiator.

Bedroom 3

3.69m x 3.63m (12' 1" x 11' 11") Rear aspect double glazed window, Radiator

Bedroom 4

5.39m x 3.47m (17' 8" x 11' 5") Double glazed skylights, Built in eaves for storage, boiler.

Bathroom 1

WC Downstairs, Built in storage, wall mounted sink.

Bathroom 2

1.83m x 1.76m (6' 0" x 5' 9") Built in storage , heated towel rail, sink, WC, Bathtub, shower, rear aspect double glazed window.

Garden

20.07m x 5.61m (65' 10" x 18' 5") Paved, grass, built in speakers, built in heaters, plug sockets, gated back access, spotlights

