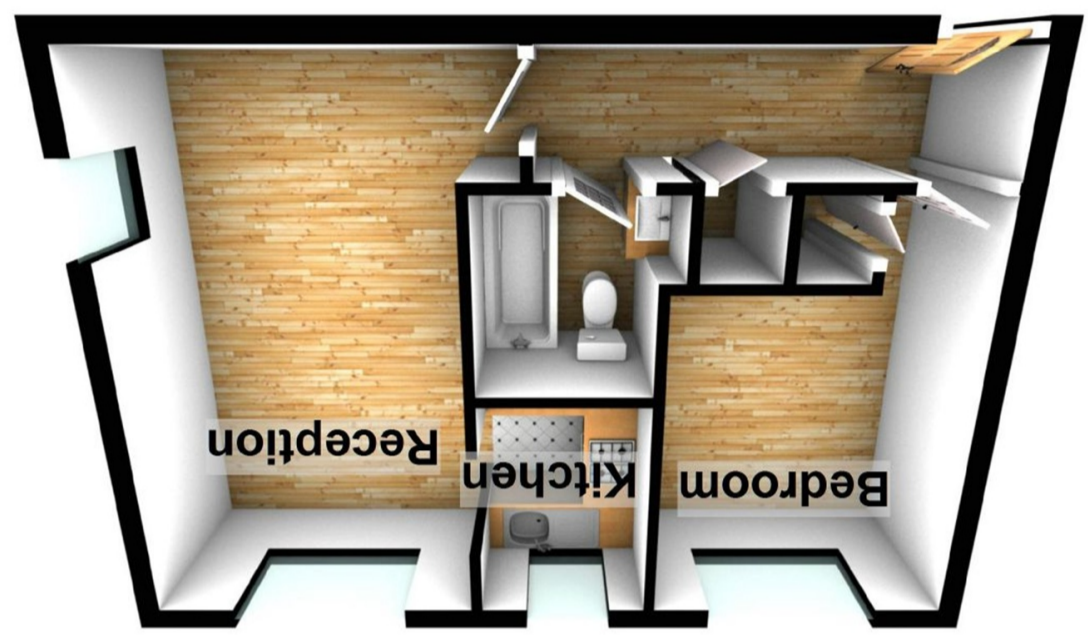


Total area: approx. 36.1 sq. metres (388.6 sq. feet)



First Floor
Approx. 36.1 sq. metres (388.6 sq. feet)



46 Chartwell Close, Greenford, London, Middlesex.
UB6 8LP.

£245,000

First floor one bedroom flat, offered to the market with no onward chain, is situated on a quiet residential close very near to Greenford Central Line Tube station. The property is ideal for a first time buyer or an investor for the buy to let market. The property is well presented with bathroom and a fitted kitchen and comes with economy seven heating, there is also a large amount of useful storage provided by the loft above and there is residential permit parking. The flat is also close to local shops, multiple bus routes and for car drivers the A40 is very easy to access for journeys in and out of London.

Reception

16' 1" x 9' 3" (4.90m x 2.82m) Side and rear aspect double glazed windows, laminate floor, opening onto

Kitchen

6' 11" x 6' (2.11m x 1.83m) Rear aspect double glazed window, range of eye and base level units with electric cooker point, stainless steel sink, plumbing and space for washing machine, part tiled walls

Bathroom

Panel enclosed bath with electric shower, vanity wash hand basin, low level WC, part tiled walls, tiled floor

Bedroom

12' 9" x 8' 7" (3.89m x 2.62m) Rear aspect double glazed window, fitted wardrobes, laminate floor

Communal Garden

Mainly laid to lawn

